

CMCP787R-IP

Dual Output IEPE Accelerometer with PT100 Temperature Output
Side Exit, Integral PUR Cable



Features

- Side Exit Dual Output Accelerometer
- Standard 100 mV/g $\pm 5\%$ Output
- Optional 10, 30, 50, 250 and 500 mV/g Outputs
- PT100 RTD Temperature Output (2 Wire)
- Integral PUR Cable
- 150°C Max Operating Temperature
- ¼"-28 UNF or M8x1.25 Mounting Options
- Submersible, -Sealed to IP68
- Lifetime Warranty



Typical Applications

Fans, Motors, Pumps, Compressors, Centrifuges, Conveyors, Air Handlers, Gearboxes, Rolls, Dryers, Presses, Cooling, HVAC, Spindles, Machine Tooling, Process Equipment and many more.

Technical Performance

Mounted Base Resonance:	21 kHz (nominal)
Sensitivity:	100 mV/g $\pm 5\%$ Nominal 80 Hz at 22°C See "Alternate Sensitivities" for Other Options
Frequency Response:	1.5 Hz to 10 kHz $\pm 5\%$ (90 cpm to 600 kcpm) 0.5 Hz to 12 kHz $\pm 10\%$ (30 cpm to 720 kcpm) 0.2 Hz to 15 kHz $\pm 3\text{dB}$ (12 cpm to 900 kcpm)
Isolation:	Base Isolated
Measurement Range:	± 80 g
Transverse Sensitivity:	Less than 5%

Electrical

Electrical Noise:	0.1 mg max
Voltage Range :	18-30 VDC
Current Range:	0.5 mA to 8 mA
Bias Voltage:	50% of Supply Voltage Nominal
Settling Time:	1 Second
Output Impedance:	200 Ohm max.
Case Isolation:	$>10^8$ Ohm at 500 Volt

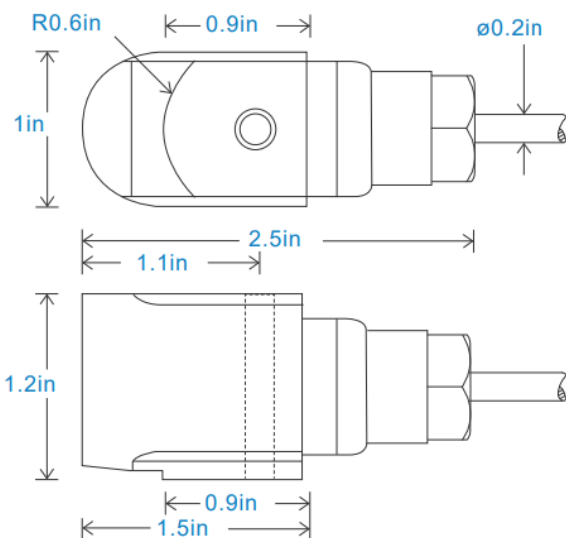
Environmental

Operating Temperature Range:	-67 to 302°F (-55 to 150°C)
Sealing:	IP68
Submersible:	Up to 100 meter (10 bar)
Maximum Shock:	5000 g
Approvals:	CE and UKCA Approved
Cable Type:	4 Wire, Shielded, PUR Jacket (Polyurethane)

Mechanical

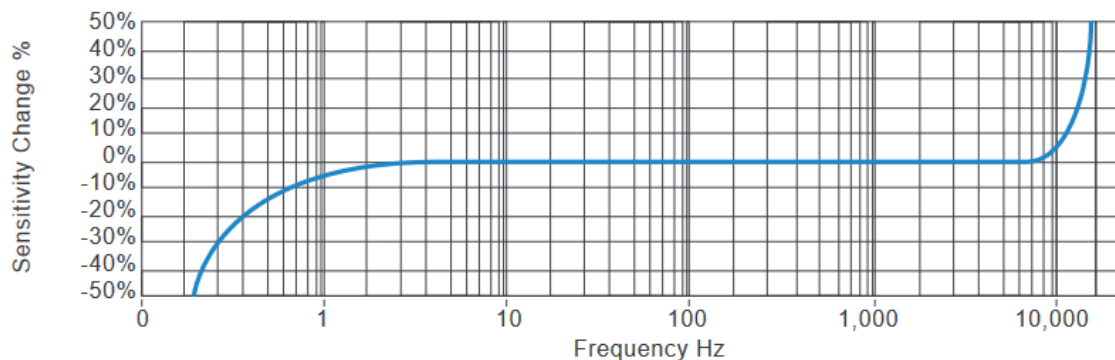
Case Material:	Stainless Steel
Sensing Element:	PZT/Shear
Mounting Torque:	5.9ft. lbs (8Nm)
Weight:	7.2 Oz (204 grams)
Mating Connector:	Integral Cable (Bare Wire)
Mounting Thread:	1/4-28 UNF or M8x1.25

Dimensions and Wiring



White: +VE Power
 Black: 0V
 Blue: PT100 Temp.
 Red (Brown): PT100 Temp.

Typical Frequency Response



Ordering Information:

CMCP787R-IP	Dual Output Accelerometer w/ PT100 Output, 100mV/g, ¼-28 UNF Mounting, 5m Cable
CMCP787R-IP-M8	Dual Output Accelerometer w/ PT100 Output, 100mV/g, M8x1.25 Mounting, 5m Cable
CMCP787R-IP10	Dual Output Accelerometer w/ PT100 Output, 100mV/g, ¼-28 UNF Mounting, 10m Cable
CMCP787R-IP10-M8	Dual Output Accelerometer w/ PT100 Output, 100mV/g, M8x1.25 Mounting, 10m Cable
CMCP787R-IP20	Dual Output Accelerometer w/ PT100 Output, 100mV/g, ¼-28 UNF Mounting, 20m Cable
CMCP787R-IP20-M8	Dual Output Accelerometer w/ PT100 Output, 100mV/g, M8x1.25 Mounting, 20m Cable
CMCP787R-IPXX	Dual Output Accelerometer w/ PT100 Output, 100mV/g, ¼-28 UNF Mounting, Specify Length
CMCP787R-IPXX-M8	Dual Output Accelerometer w/ PT100 Output, 100mV/g, M8x1.25 Mounting, Specify Length

Specify Cable Length in Meters After -IP. Default Cable Length is 5m.

Example: CMCP787R-IP15 = Sensor with 15m Integral Cable.

Maximum Cable Length of 100m

Alternative Sensitivity Ordering Information:

CMCP787R-IP-XXX Specify Sensitivity from Table Below in Place of -XXX

Sensitivity	Dynamic Range	Resonant Frequency
10 mV/g	±800 g	1,680 kcpm (28 kHz)
30 mV/g	±250 g	1,560 kcpm (26 kHz)
50 mV/g	±160 g	1,440 kcpm (24 kHz)
250 mV/g	±32 g	1,200 kcpm (20 kHz)
500 mV/g	±16 g	1,080 kcpm (18 kHz)

Note: Due to STI's continuous process improvement, specifications are subject to change without notice.